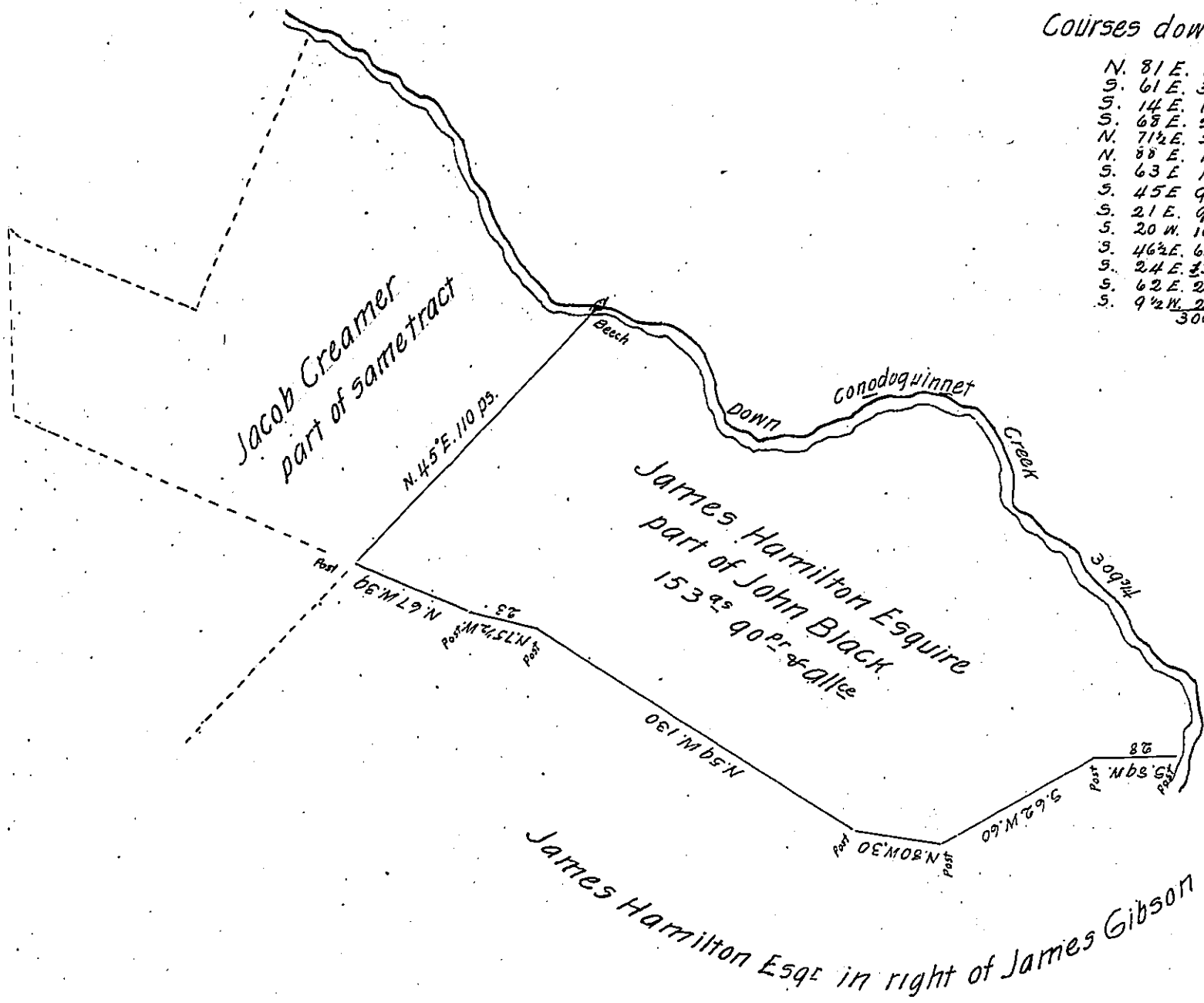


Courses down Creek.

N.	81 E.	10
S.	61 E.	33
S.	14 E.	19
S.	68 E.	21
N.	71 1/2 E.	51 1/2
N.	80 E.	10
S.	63 E.	14
S.	45 E.	9 3/4
S.	21 E.	9
S.	20 W.	10
S.	46 1/2 E.	61
S.	24 E.	33 1/2
S.	62 E.	24
S.	9 1/2 W.	24
		309 3/4



A Draught of a Tract of Land situate in Let-  
 terkenny Township Franklin County, containing  
 one hundred & fifty three Acres and ninety perches  
 and allowance of six per cent for Roads &c.  
 being part of a larger tract of 250<sup>ac</sup> 166 ps which  
 was Resurveyed the 28<sup>th</sup> November 1827. In pursu-  
 ance of a Warrant to John Black bearing date  
 11<sup>th</sup> day of October 1774 - divided off the above  
 part 28<sup>th</sup> November 1827.

William Hamilton D<sup>s</sup>

To Gabriel Niester Esq<sup>r</sup>.  
 Surveyor General

IN TESTIMONY that the above is a copy of the original remaining on file in  
 the Department of Internal Affairs of Pennsylvania, made  
 conformably to an Act of Assembly approved the 16th day of  
 February, 1833, I have hereunto set my Hand and caused  
 the Seal of said Department to be affixed at Harrisburg,  
 this seventh day of March 1904

*Loac R. Brown*  
 Secretary of Internal Affairs.